

Service

Be it one of our products or an individual system solution – you can rely on our **professional advice** for a effective vision solution. With certainty.

You are planning a completely new production line? You need perfect interaction of mechanics, electronics and sensors right from the start? Our **studies** facilitate the design of conclusive overall solutions.

We offer training workshops for efficient use of our products and systems. We will introduce the FiberVision systems right in your production line with real products. The **seminars** on the basic principles of optics and illumination are held or in our seminar rooms. They will give you the knowledge to apply machine vision successfully.

Accessories

We provide the accessories needed to use our products, too. You will receive a thought through one stop solution. Besides of **optics** and **lightning** FiberVision supplies useful tools for electric integration into your facilities.



Break-Out Module FV-EXT1

Break-Out Module FV-EXT2



Distributed by:



Contact

FiberVision GmbH
Jens-Otto-Krag-Str. 11
D-52146 Würselen
Germany

Phone: +49 2405 4548-0
Fax: +49 2405 4548-14

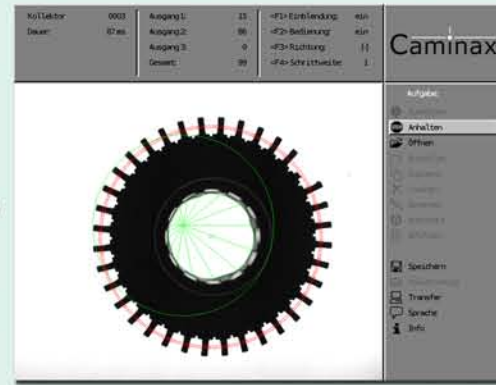
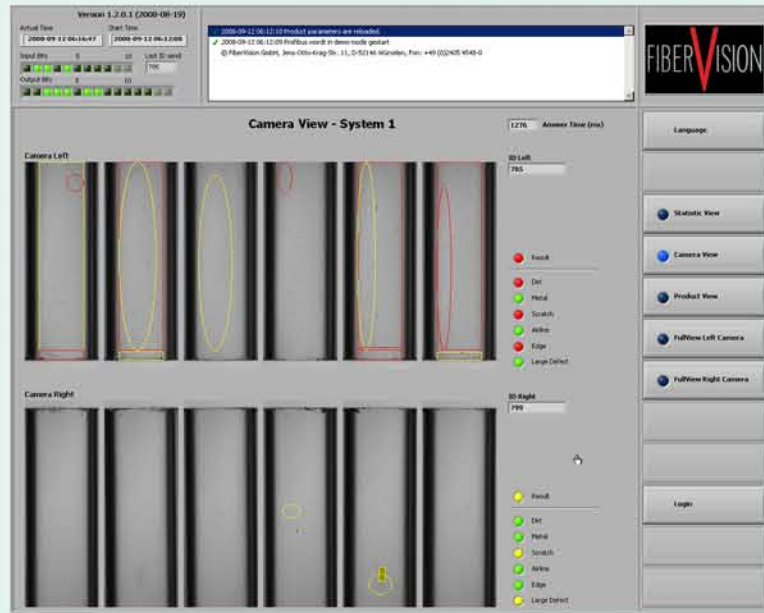
info@fibervision.de
www.fibervision.de/en

www.fibervision.de/en

Machine Vision
Automation
Quality Control

FiberVision

The engineers and scientists from FiberVision develop and build optical measurement, positioning and inspection systems for industrial use. The essential feature of FiberVision machine vision systems is: The easy access to complex technologies by providing user interfaces for intuitive use.



»FiberVision systems perform in production just as they are expected. They work – day by day, shift by shift.«

Products

Caminax®

Caminax is a real Smart Camera. The fully-fledged machine vision system is as compact as a sensor. Caminax does not need a PC for any action. The measurement and test tasks are configured right in the assembly line using just a keypad and a standard VGA video display. The fact that the inspection goes without PC, that's understood! Caminax shows the image of the product inspected including the result and possible failure reasons during production.



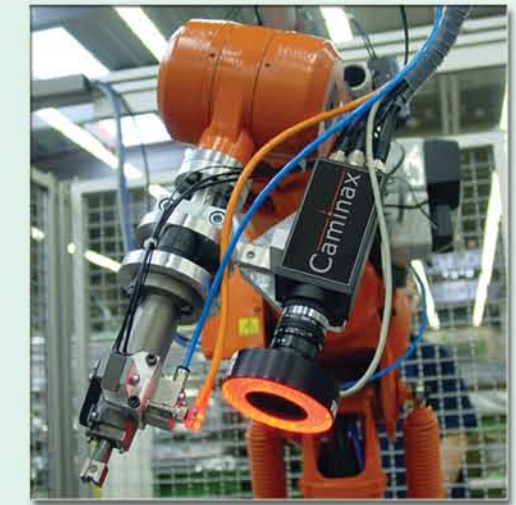
LED-Check

LED-Check tests up to 250 LEDs in less than one second. This is done with precisely calibrated standard color space outputs like CIE1931 xyY or hue, saturation and intensity (HSI). LED-Check is used in the automotive industry to check car dashboards.

Systems

A camera, some software, a training lesson – and you are not done with? You have an automation task and look for an expert to solve it? FiberVision is at your service at every necessary step:

- Choosing the right cameras, optics and lightning
- Planning and design of mechanical and electrical integration
- Integration of the system, set-up configuration and start
- Maintenance and service

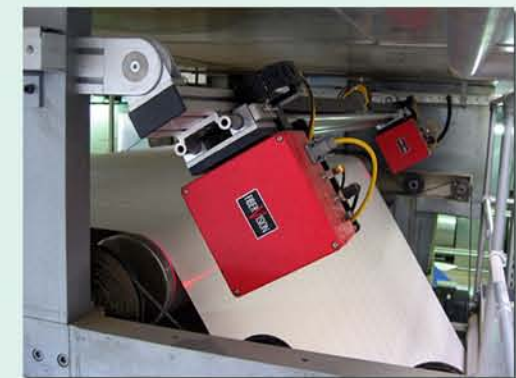


Multi Camera Systems

We deploy multi camera systems for the following tasks:

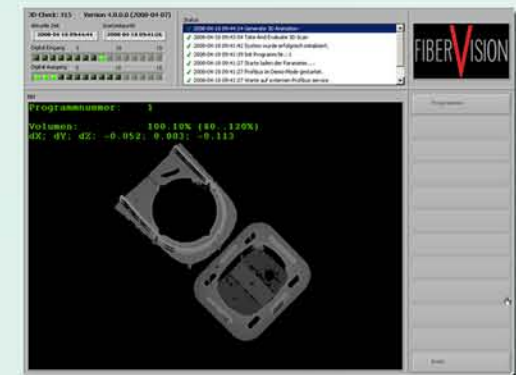
- Inspection of large products with high precision demands
- Inspection of one product under different points of view at the same time
- Combined inspection of color and geometry

FiberVision multi camera systems combine the data of the different cameras and produce a user friendly visualization of the all-over result.



PC-Systems

Our PC based systems enable individual user guidance. Special data exchange protocols with PLCs or robots are usually realized most effectively using PC based systems. The FiberVision PC based systems archive camera images and results and provide interfaces to quality management systems.



Smart Cameras

Smart camera systems are space saving tools for roughest operation environments. Cooled cabinets, blocked fan filters and defect hard disk drives do not exist in the world of smart cameras. FiberVision builds customized smart camera machine vision systems for highest availability, low space requirements and minimal operational costs.

